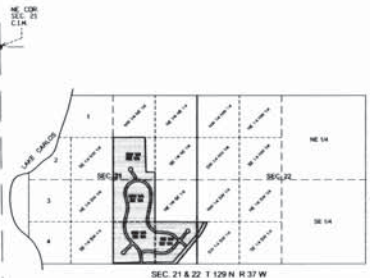
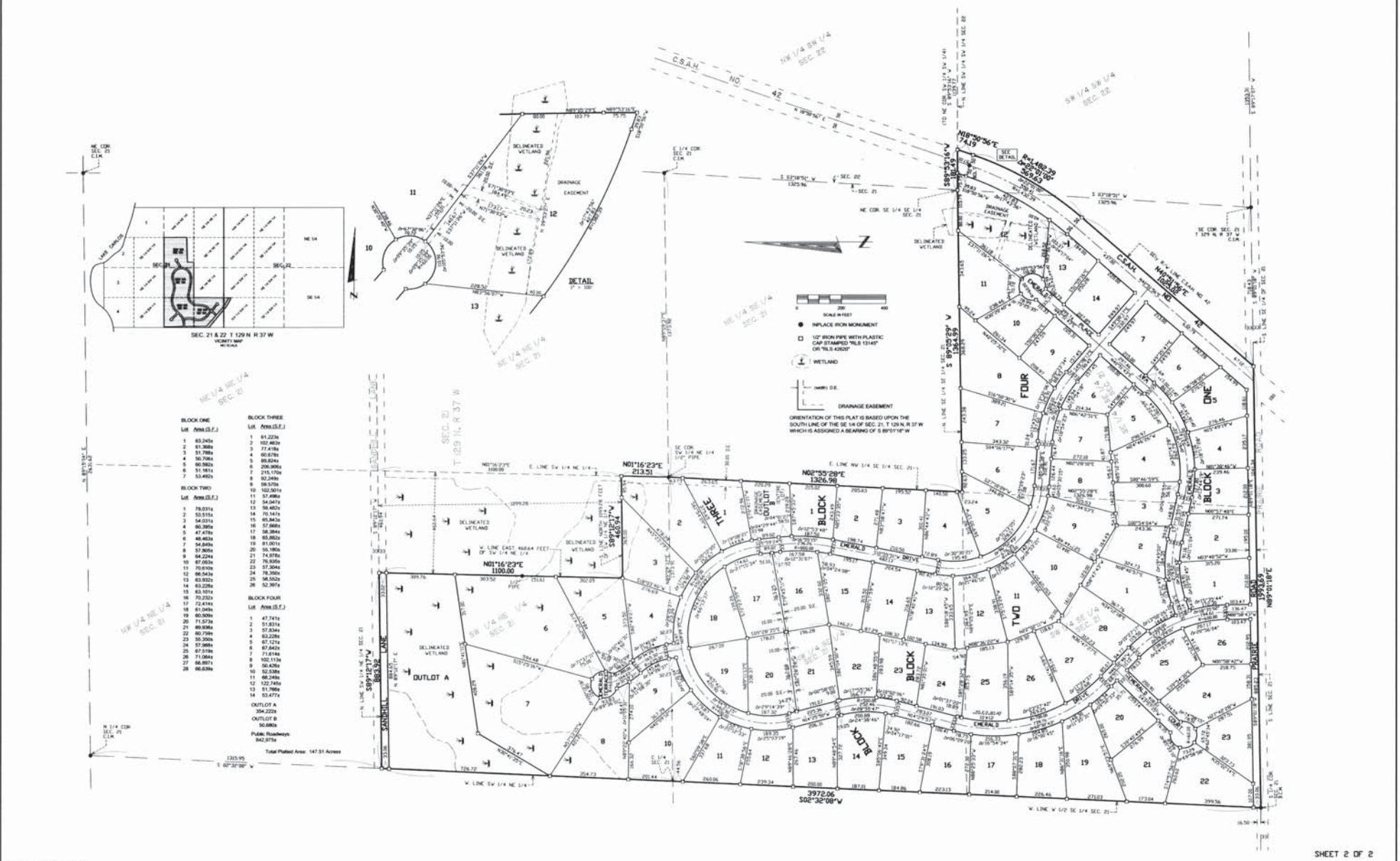


# PINE HAVEN



- |                  |                    |
|------------------|--------------------|
| <b>BLOCK ONE</b> | <b>BLOCK THREE</b> |
| LR Ann.(S.E.)    | LR Ann.(S.E.)      |
| 1 83,245         | 1 81,224           |
| 2 81,369         | 2 102,463          |
| 3 51,788         | 3 77,478           |
| 4 80,776         | 4 60,876           |
| 5 80,982         | 5 88,844           |
| 6 51,811         | 6 206,902          |
| 7 53,483         | 7 215,170          |
|                  | 8 82,286           |
| <b>BLOCK TWO</b> | <b>BLOCK FOUR</b>  |
| LR Ann.(S.E.)    | LR Ann.(S.E.)      |
| 1 78,834         | 1 47,544           |
| 2 53,574         | 2 51,834           |
| 3 54,314         | 3 57,544           |
| 4 80,364         | 4 63,238           |
| 5 47,476         | 5 67,574           |
| 6 48,462         | 6 87,842           |
| 7 54,846         | 7 102,138          |
| 8 57,866         | 8 80,206           |
| 9 64,224         | 9 62,238           |
| 10 87,258        | 10 82,238          |
| 11 70,818        | 11 80,246          |
| 12 86,348        | 12 122,148         |
| 13 83,821        | 13 81,788          |
| 14 83,228        | 14 51,474          |
| 15 63,104        |                    |
| 16 70,232        |                    |
| 17 72,414        |                    |
| 18 81,048        |                    |
| 19 80,306        |                    |
| 20 71,572        |                    |
| 21 89,504        |                    |
| 22 80,738        |                    |
| 23 50,206        |                    |
| 24 87,198        |                    |
| 25 87,198        |                    |
| 26 71,864        |                    |
| 27 86,882        |                    |
| 28 86,836        |                    |

**OUTLOT A**  
 394,2222  
 0475.01 W  
 50.8603

Public Roadways  
 862,3754  
 Total Platted Area: 147.51 Acres